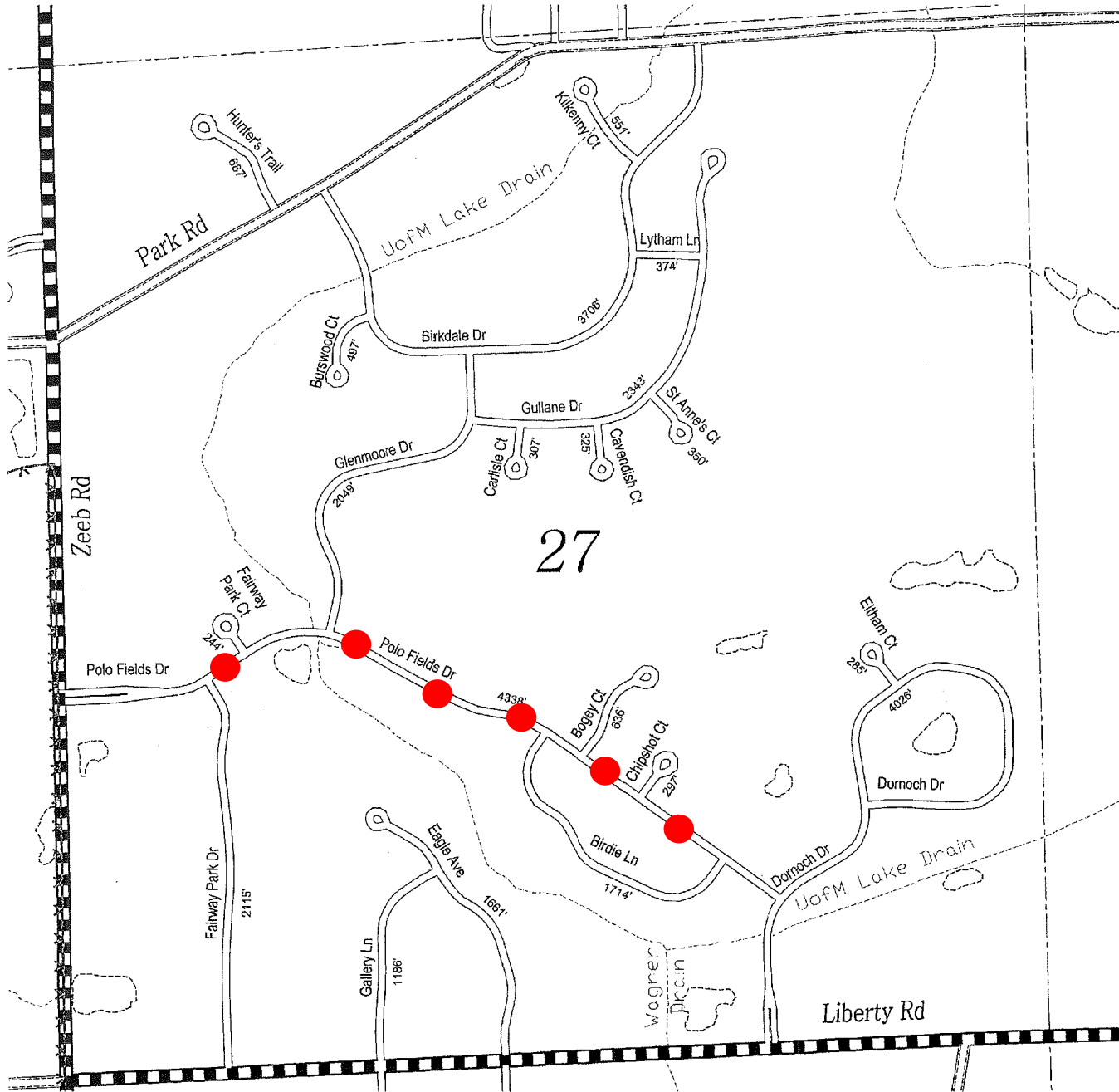


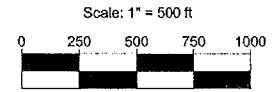
# Proposed Locations for Speed Humps



**Legend**

- State Roads
- Primary Paved
- Primary Gravel
- Local Paved
- Local Gravel
- Local Sub'n, Public
- City or Village Street
- Railroad
- Section Line
- Water Feature
- Adjacent County Road
- Corporate Limits
- Urban Boundary

Local Road System Total Feet 27,691 Equals 5.24 Miles.



Scio Township  
 T. 2 S., R. 5 E., Section 27  
 Washtenaw County

